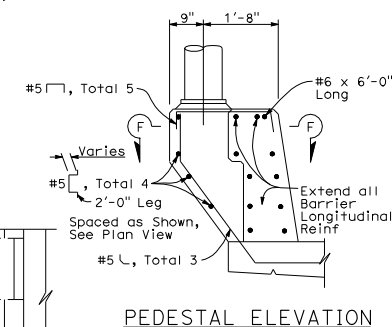
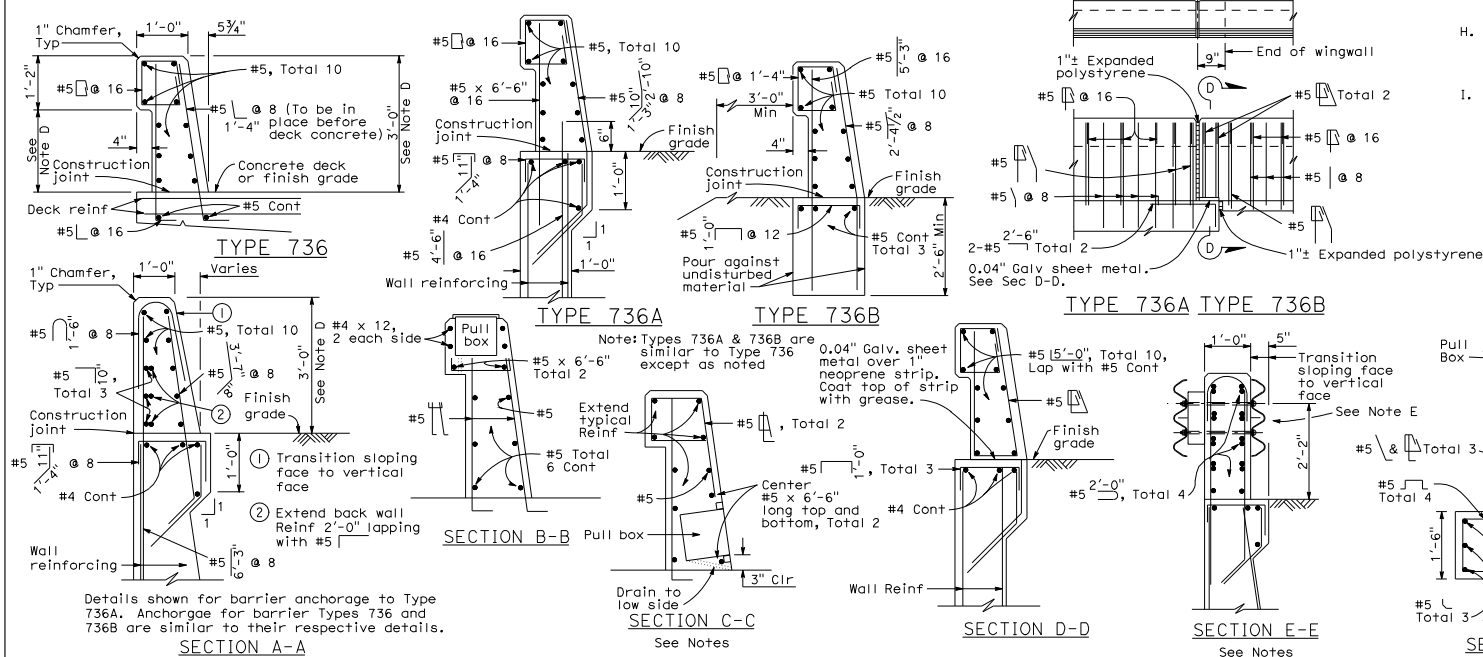


- A. Walls are to be backfilled before barrier is placed.
- B. Clearance to reinforcing steel in barrier to be 1", except as noted. Longitudinal reinforcement to stop at all expansion joints.
- C. See Project Plans for locations of electroliers and pull boxes.
- D. Dimensions may vary with roadway cross slope and with certain thickness of surfacing. See Project Plans.
- E. For typical metal railing connection details not shown, see Standard Plans A77J1 and A77J2.
- F. See Standard Plans ES-9A, ES-9B, ES-9C, ES-9D and ES-9E for electrical details. The maximum number of conduits in the barrier is limited to two (2) conduits along with one (1) 3" conduit. When a 3" conduit is used, it is restricted to the base of the barrier.
- G. For electrolier mounting details, See Standard Plans ES-6A and ES-6B.
- H. Minimum concrete edge distance, to the reinforcing shown, shall be maintained. Edge distance may be adjusted to accommodate increase in concrete cover for architectural treatment.
- I. Taper the top of the end of the bridge railing at 4:1 to match the top elevation of the thrie beam rail element.



STATE OF CALIFORNIA
DEPARTMENT OF TRANSPORTATION
**CONCRETE BARRIER
TYPE 736**

NO SCALE

B11-56